

BARAKA PINISI LIVEBOARD

PHINISI BOAT



BOAT SPECIFICATION

LENGTH :

25 Meters

WIDTH :

5,60 Meters

MATERIALS :

Teak

CAPACITY :

16 Person

BUILT :

2024

SPEED :

±8 knots /hour

GT :

99

WIFI :

Starlink

WATER :

9.000 liters fresh water

MAIN ENGINE :

Mitsubishi 8DC10, 275PK

ELECTRICITY :

2 Generator set 40 kVa

NAVIGATION :

GPS, Radar, Radio VHS, Radio SSB, Echosounder, AIS, Binocular and Compass

SAFETY TOOLS :

17 Fire Extinguisher, 2 life raft (20 people), Oxygen Tank Set, First Aid Kit, Stretcher/Tandu, Parachute Signal, 30 life jackets, lifebuoys

FEATURE

Air Conditioner Cabins
En-Suite bathrooms
Non-Diver (Snorkeler) Friendly
Audio & video entertainment
Indoor Dining
Charging stations
Free Wi-Fi | Satellite Internet
Sun Deck



OUTDOOR AREA





BRIDGE



TOP DECK





INDOOR RESTAURANT





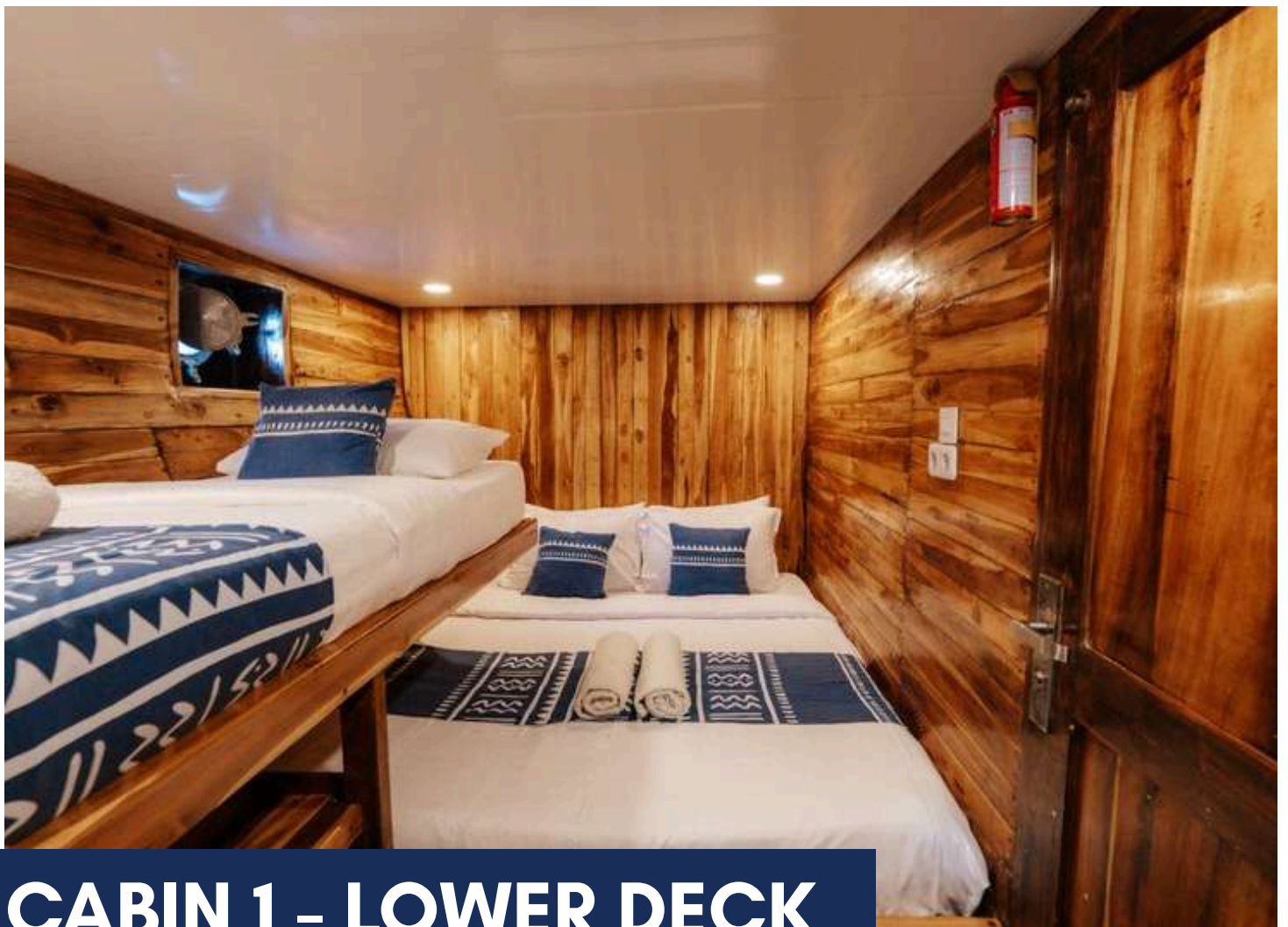
INDOOR RESTAURANT





DIVE DECK

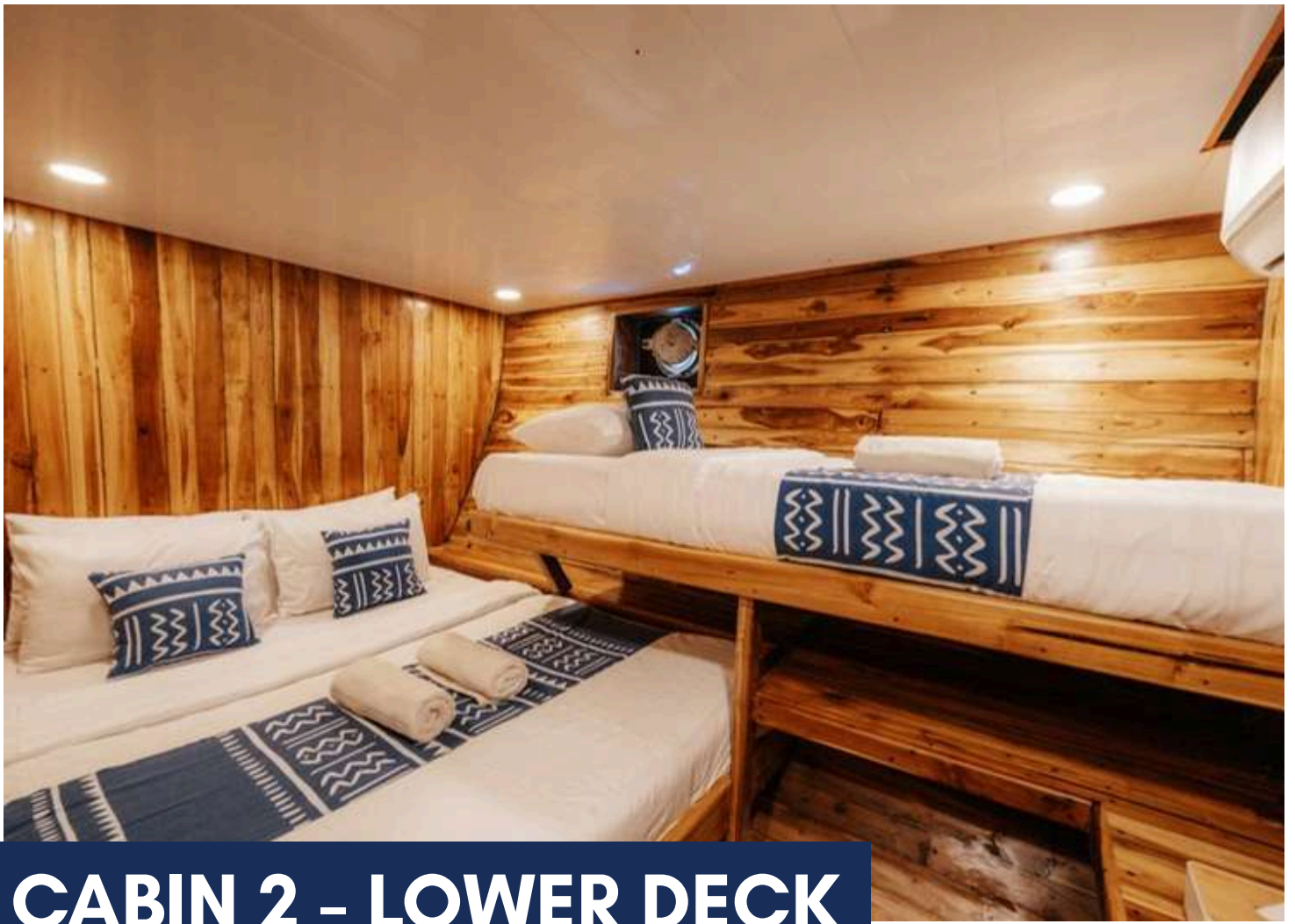




CABIN 1 - LOWER DECK

1 DOUBLE BED + 1 SINGLE BED

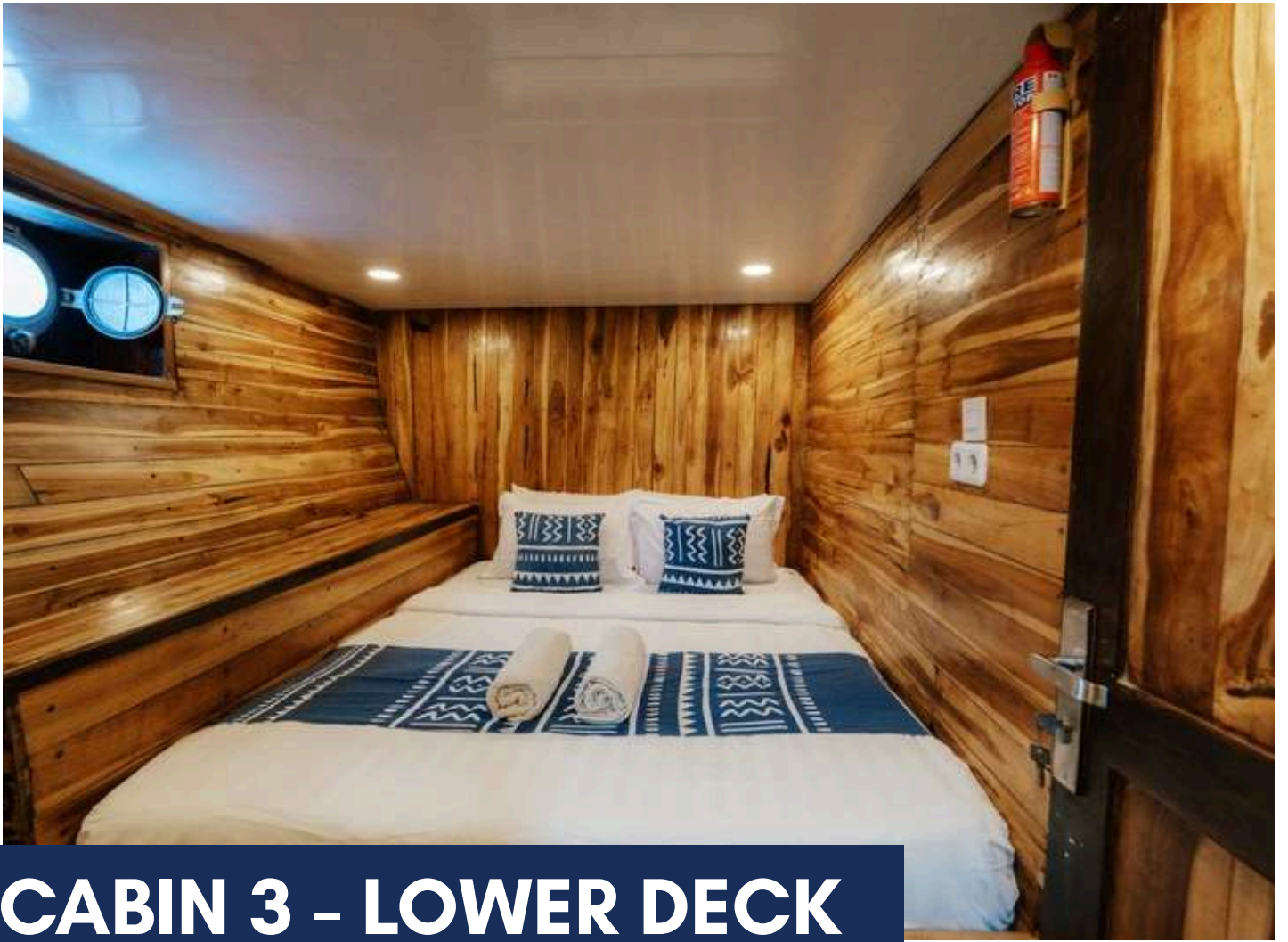




CABIN 2 - LOWER DECK

1 DOUBLE BED + 1 SINGLE BED





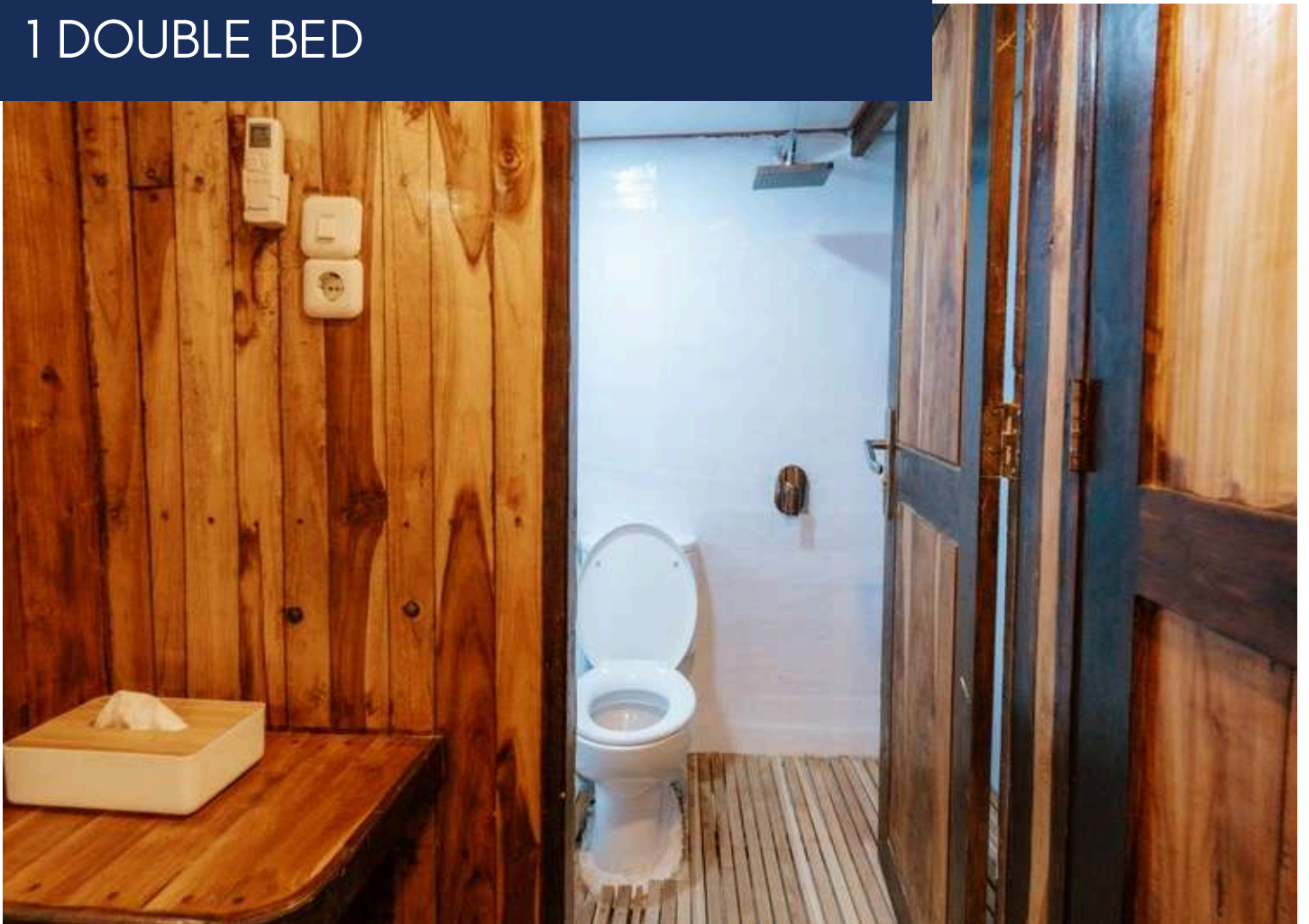
CABIN 3 - LOWER DECK
1 DOUBLE BED





CABIN 4 - LOWER DECK

1 DOUBLE BED





CABIN 5 - UPPER DECK
2 SINGLE BED





CABIN 6 – UPPER DECK

2 SINGLE BED





CABIN 7 - UPPER DECK

1 DOUBLE BED



ITINERARY LEISURE

KOMODO NATIONAL PARK

DAY 1

Padar Island
Komodo Island
Pink Beach
Labuan Bajo

2D1N

Kelor Island
Menjerite Island
Rinca Kalong

Padar Island
Pink Beach
Komodo Island
Labuan Bajo

3D2N

Kelor Island
Menjerite Island
Rinca Kalong

Padar Island
Pink Beach
Komodo Island
Taka Makassar
Manta Point

Sebayur Island
Kanawa /
Bidadari Island
Labuan Bajo

4D3N

Kelor Island
Menjerite Island
Rinca Kalong

Padar Island
Pink Beach
Komodo Island

Taka Makassar
Manta Point
Gili Lawa Darat

Sebayur Island
Kanawa /
Bidadari Island
Labuan Bajo

ITINERARY DIVING

KOMODO NATIONAL PARK

DAY 1

Arrival - Labuan Bajo
(L/D) Upto 3x Dives

- Pickup
Airport/Hotel
Transfer To Vessel -
Sebayur
- Mini Wall
- Night Dive.

DAY 2

Komodo National Park
(B/L/D) Upto 4x Dives

- Crystal Rock
- Castle Rock
- Cauldron
- Night Dive.

DAY 3

Komodo National
Park (B/L/D) Upto 4x
Dives

- Trekking Padar
Island
- Padar Bay
- 3 Sister
- Pilarsteen
- Night Dive

DAY 4

Central Komodo - Labuan
Bajo (B/L/) Upto 3x Dives
/ 2x Dives + Komodo
Dragon Tour

- Batu Bolong
- Makasar Reef
- Wainilu Or Komodo
Dragon Tour (Rinca)
- Transfer To Hotel
- See You Next Trip

*Itineraries, times, dive sites and number of dives are subject to change due to weather and sea conditions, availability of safe anchorage, government regulations, dive skill, special requests or circumstances and other factors, Every effort will be made to carry out the program as planned.

PRICE LIST

LEISURE LIVEBOARD - PRIVATE CHARTER
(KOMODO NATIONAL PARK AREA)

PACKAGES

2D1N

3D2N

4D3N

5D4N

6D5N

7D6N

8D7N

9D8N

1 - 8 person

USD 4,425

USD 5,888

USD 7,850

USD 9,813

USD 11,775

USD 13,738

USD 15,700

USD 17,663

9 - 12 person

USD 4,675

USD 6,263

USD 8,350

USD 10,438

USD 12,525

USD 14,613

USD 16,700

USD 18,788

13 - 16 person

USD 4,925

USD 6,638

USD 8,850

USD 11,063

USD 13,275

USD 15,488

USD 17,700

USD 19,913

DIVING LIVEBOARD - PRIVATE CHARTER
(KOMODO NATIONAL PARK AREA)

PACKAGES

3D2N

4D3N

5D4N

6D5N

7D6N

8D7N

9D6N

1 - 8 person

USD 8,513

USD 11,100

USD 13,875

USD 16,650

USD 19,425

USD 22,200

USD 24,975

9 - 12 person

USD 8,888

USD 11,600

USD 14,500

USD 17,400

USD 20,300

USD 23,200

USD 26,100

13 - 16 person

USD 9,263

USD 12,100

USD 15,125

USD 18,150

USD 21,175

USD 24,200

USD 27,225

INCLUDED

- Transfer in/out from hotel/airport Labuan Bajo - harbor
- Cabin Ac, Ensuite Bathroom & Amenities
- Fullboard meals 3x/day, Evening Snack 1x/day, Free Flow Mineral Water, Tea & Coffee
- Local Guide
- Snorkeling Gears
- Excursion / Land Visit / Hopping Island
- Upto 4x dives/day, Dive Guide, Tank, Weights/weight belt (diving only)

EXCLUDED

- Entrance Fee Komodo National Park
- Local Government Entrance Fee Komodo Island / Rinca Island
- Ranger Komodo Island / Rinca Island
- Flight ticket domestic or International
- Hotels and meals before and after the vessel
- Travel insurance & Dive Accident Insurance
- Alcoholic drinks, Personal expenses
- Crew gratuities
- Dive equipment rental (other than dive cylinders, weights and weight belt)
- Documentation
- Others

Komodo National Park Only : Embarkation (check-in) start from 07.00AM, and disembarkation (check-out) before 05.00PM



PHOTOS GALLERY



